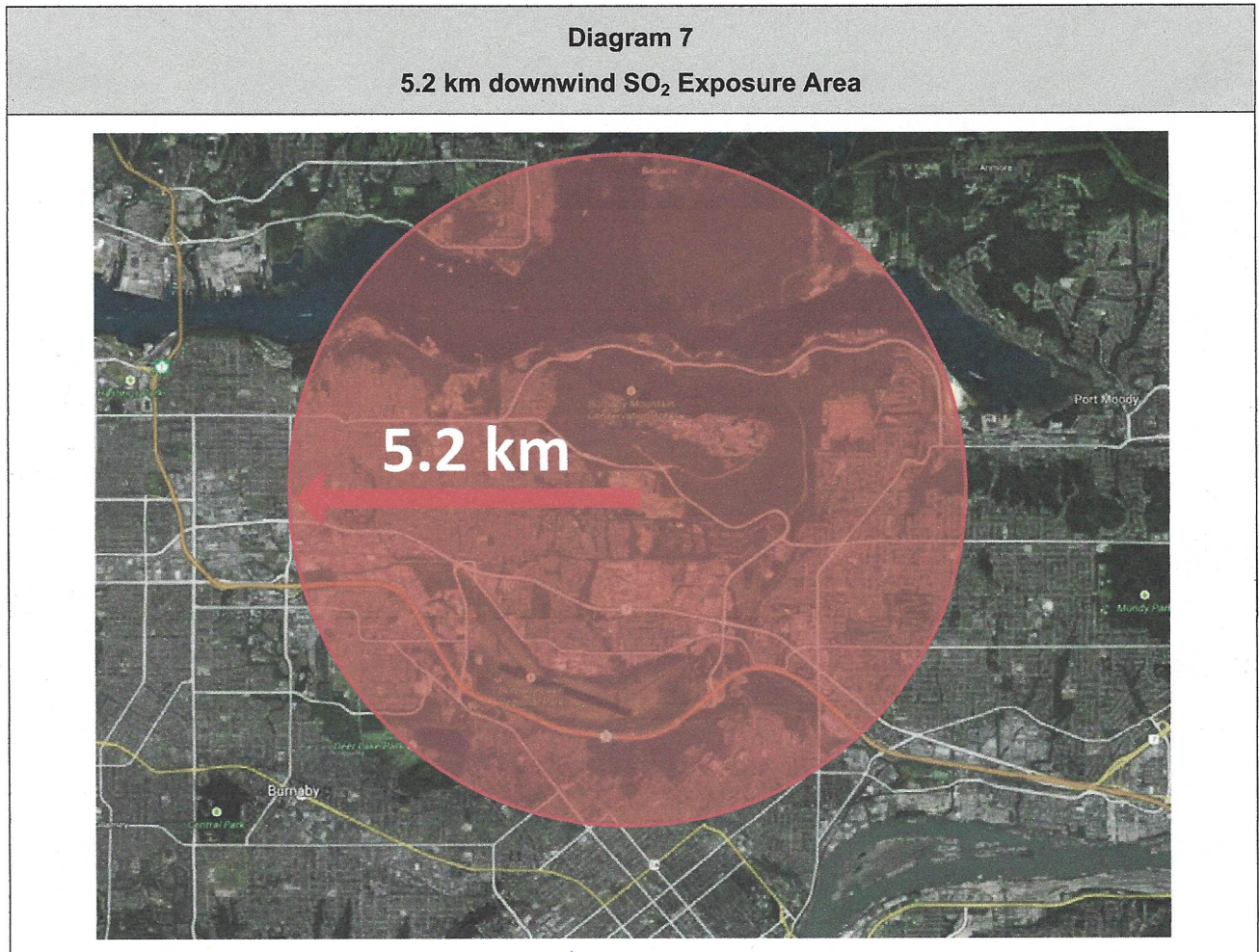


Sulphur Dioxide is another compound generated from the combustion of crude oil with sulphur content.

In Kinder Morgan Canada Risk Assessment Trans Mountain Expansion Project – Burnaby Terminal Project, October 1st, 2013 Doug McCutcheon and Associates, Consulting

- P. 3 “However as there is a possibility some of the oil will contain small amounts of Sulphur which will be converted to Sulphur Dioxide (SO₂) in a fire, the analysis shows a potential health concern could be felt up to 5.2 km downwind”



The design basis of the TMEP that moves crude oil storage tanks closer to the fenceline, creates close proximity potential release or spill of crude oil into secondary containment dikes and the potential for the release of Sulphur based gases to areas outside the fenceline. These gases that dissipate very slowly because of their molecular weight, present legitimate hazard of poison exposure to the populated areas.